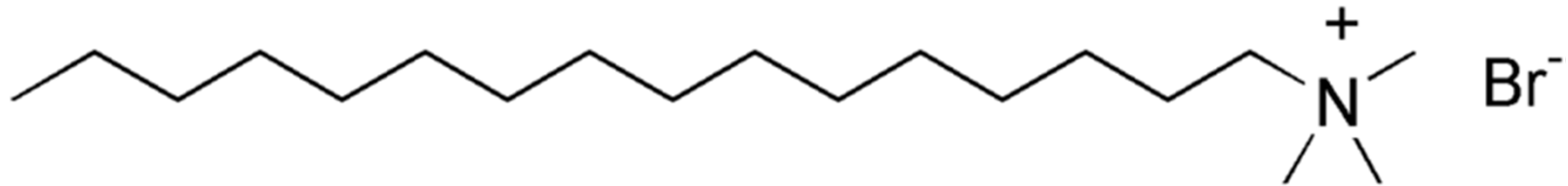


Micelas Gigantes

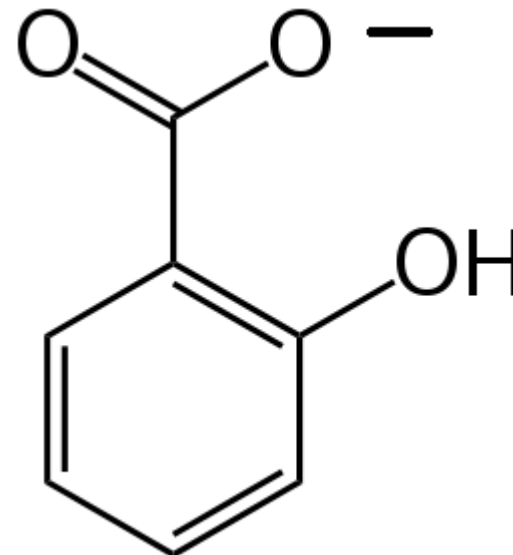
Formação

Cetyl trimethylammonium bromide (CTAB)

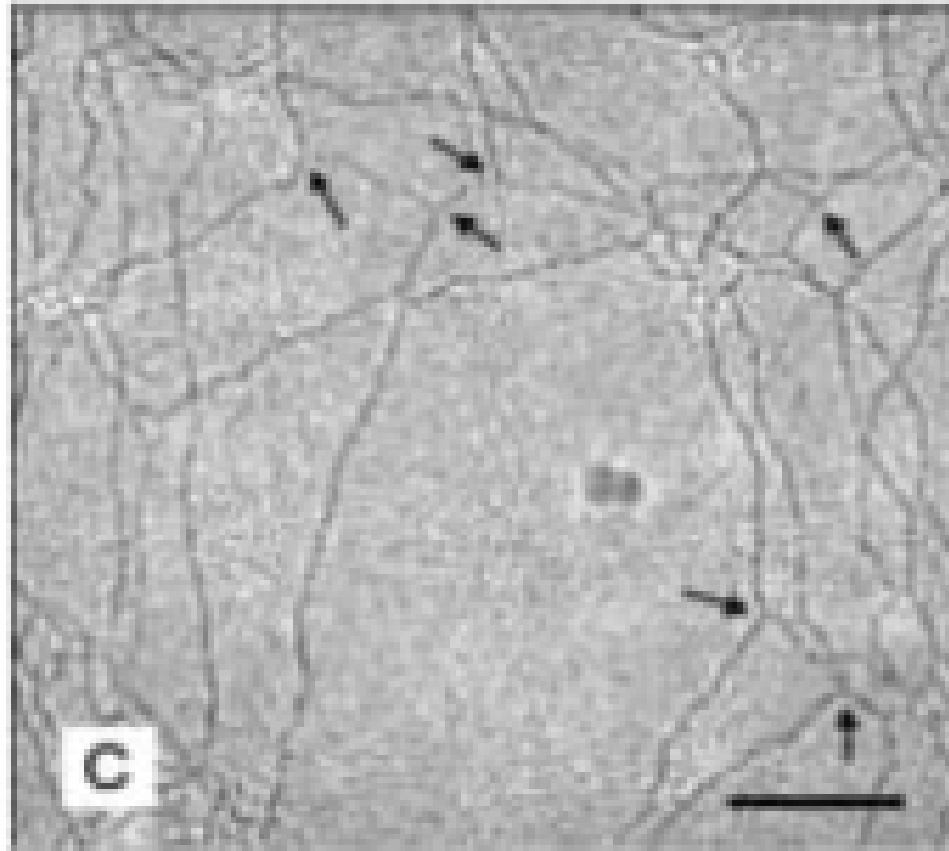


+

Salicylate

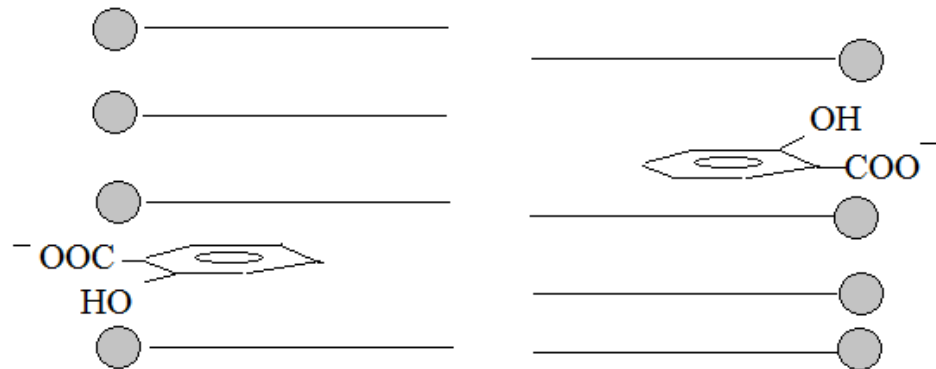
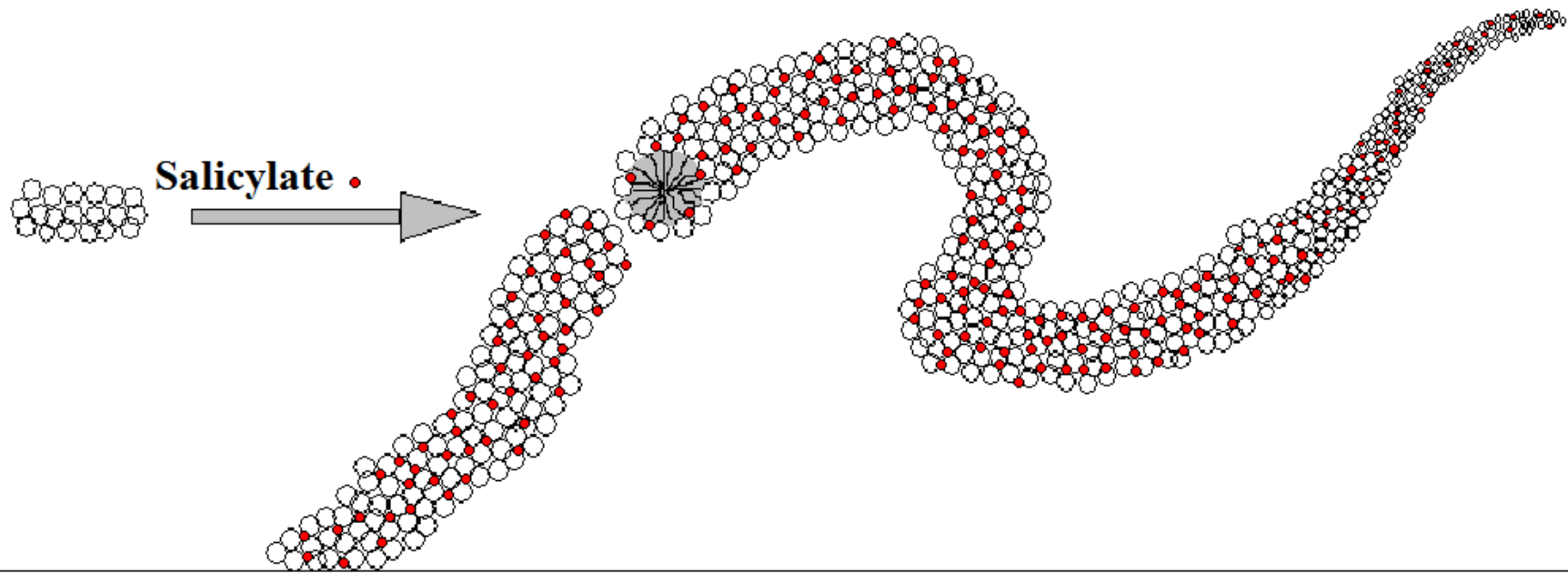


Cryo-TEM – Melting of chains of wormlike micelles

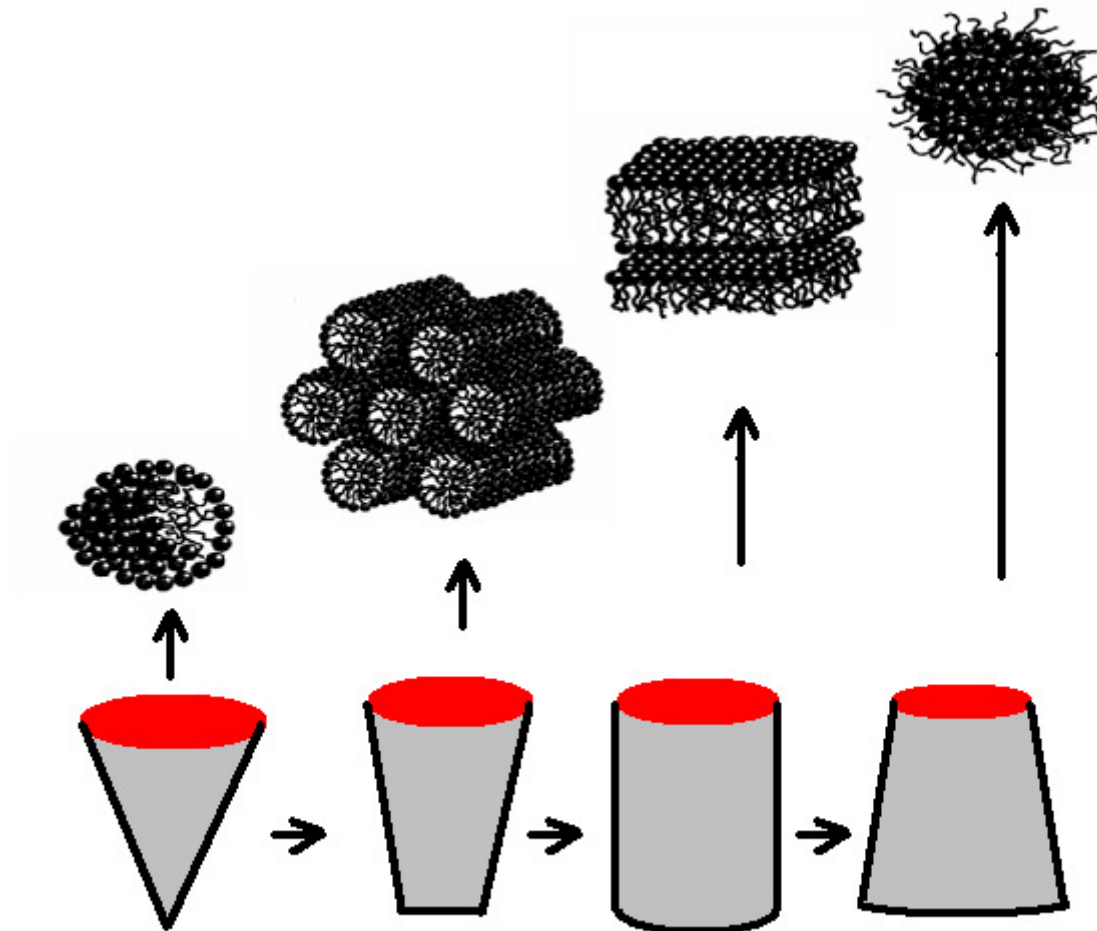


Langmuir , **2003**, 19, 8536-8541

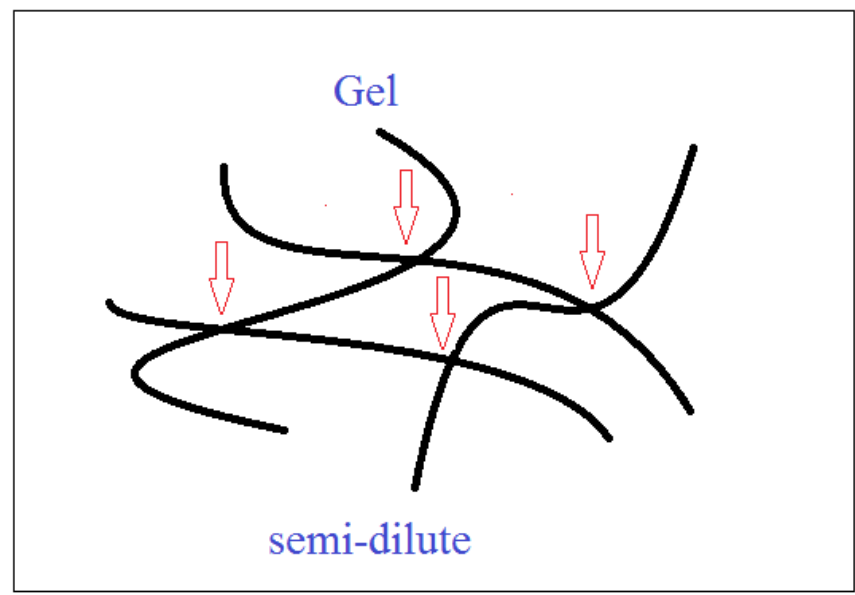
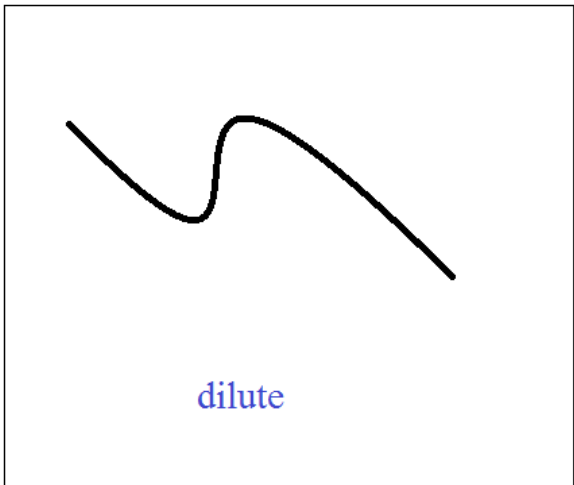
Ratios of Salicylate / CTAB = ξ



A lógica molecular para o empacotamento

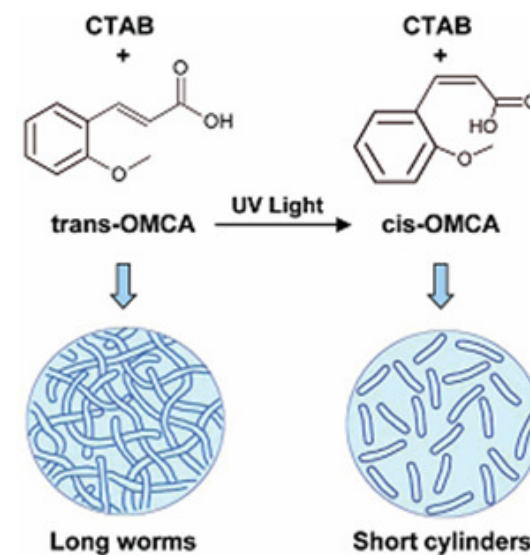
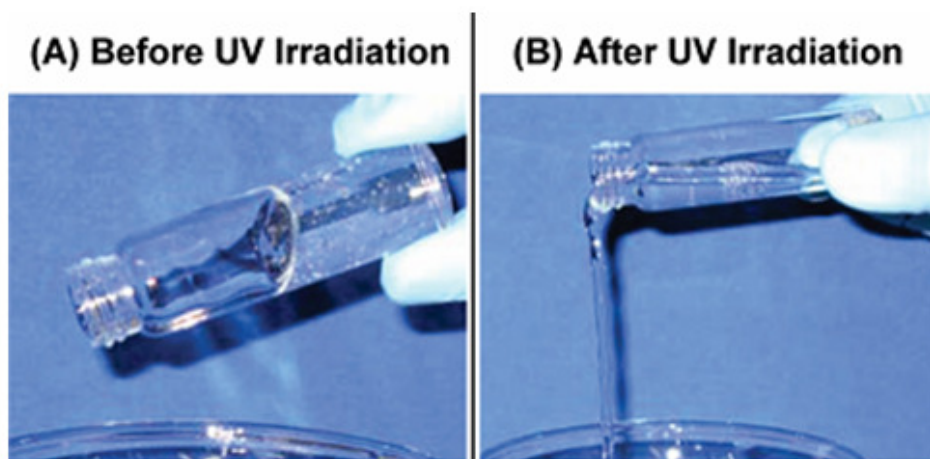


Formation of *wormlike micelles*



Aplicações

Photo-Rheology



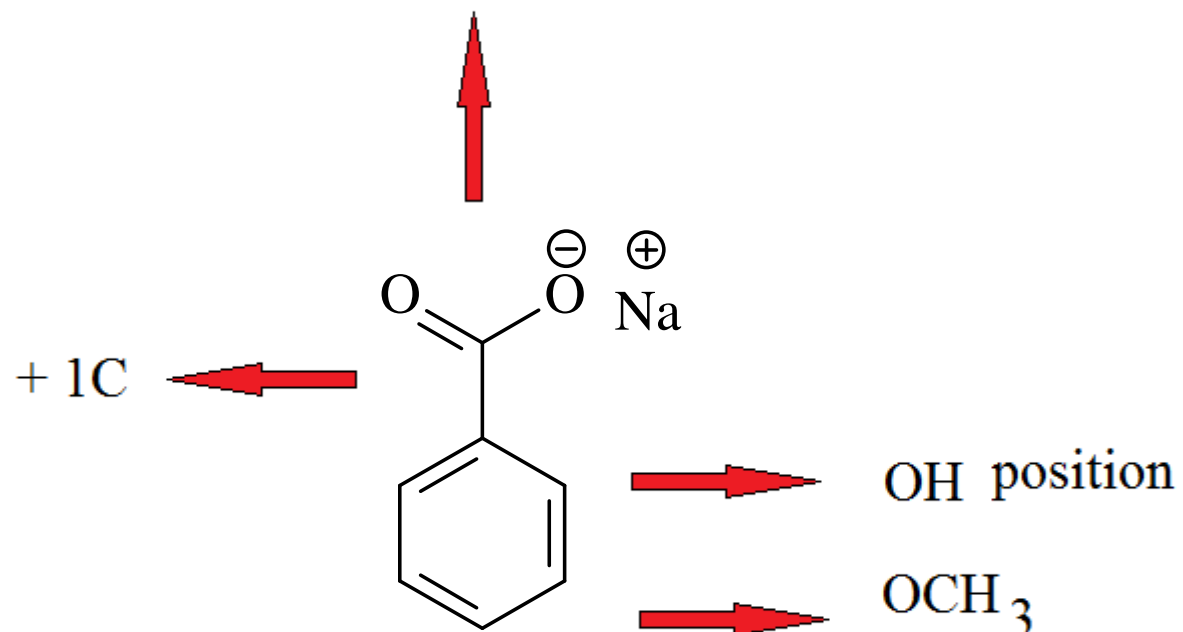
Raghavan J. *et al.* *Am. Chem. Soc.*, **2007**, 129 (6), 1553-1559.

Interesses IQ-Unicamp

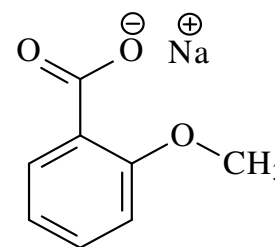
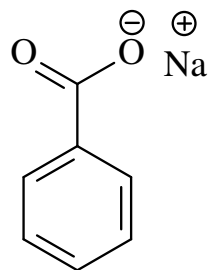
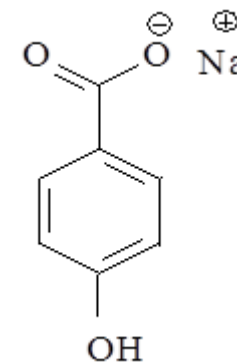
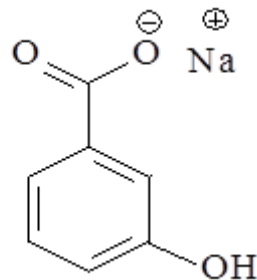
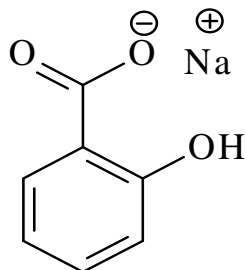
Aim



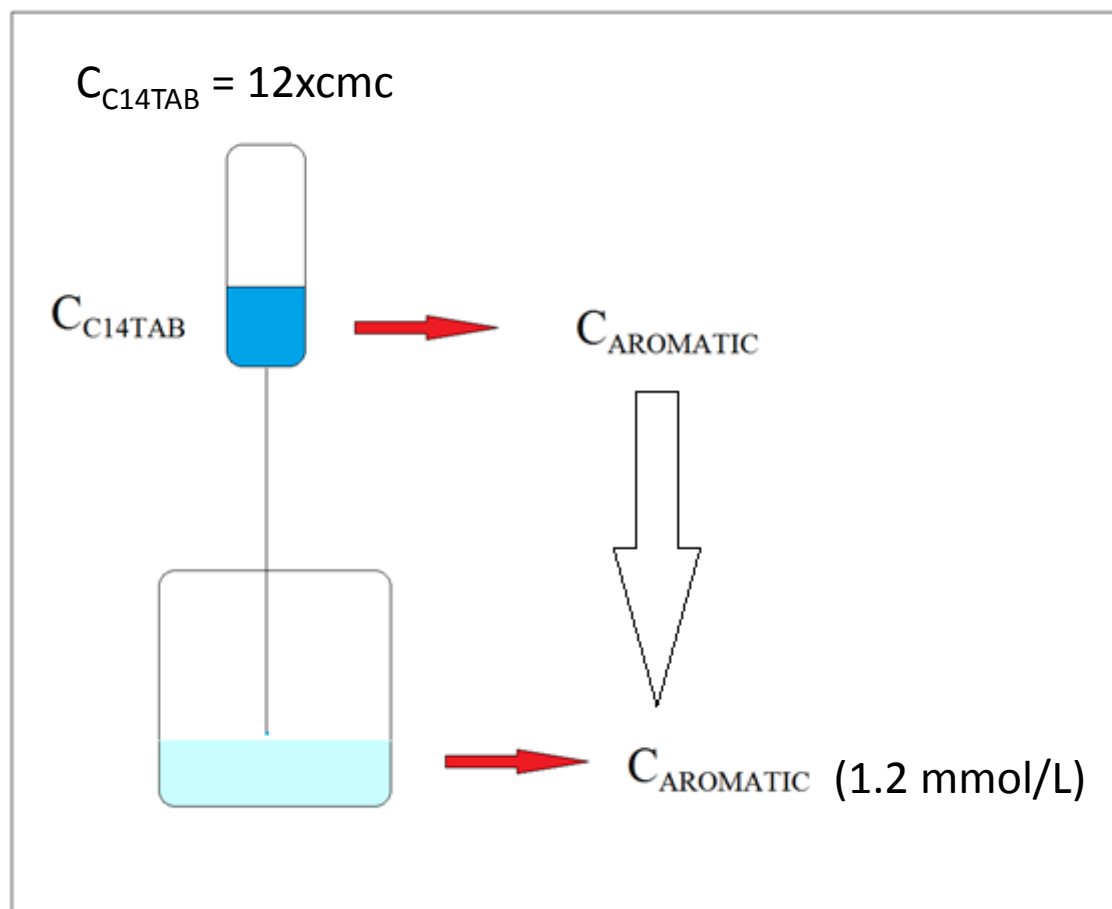
variation group



Co-Solutes - Benzoate-like

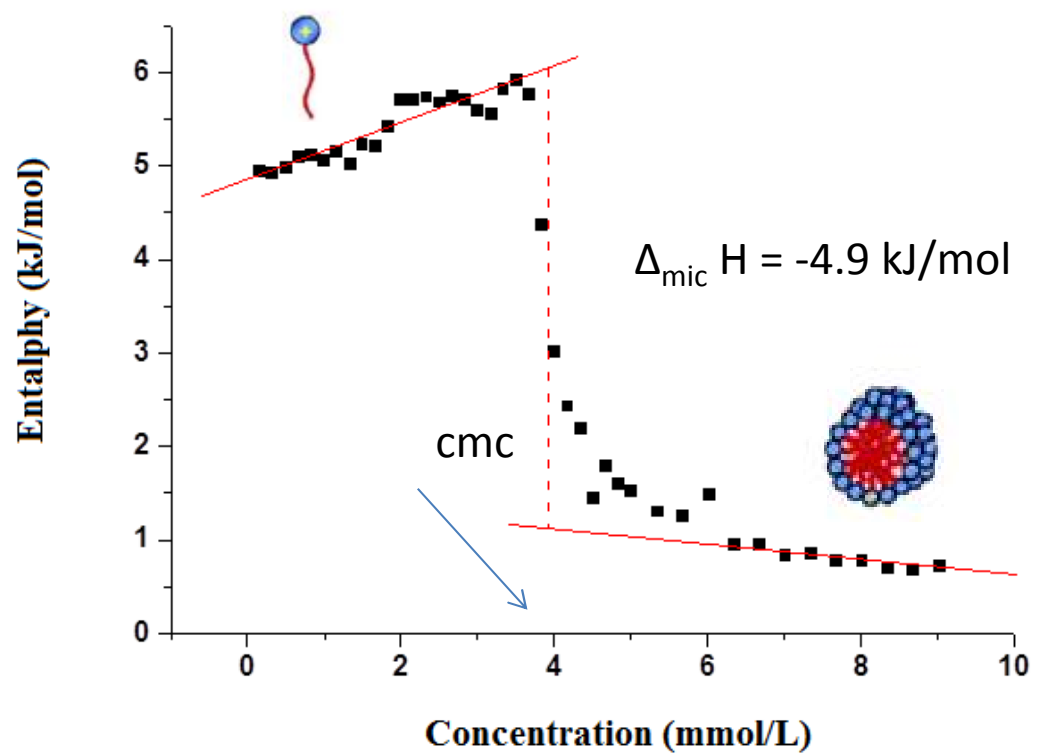


ITC- First Experiments

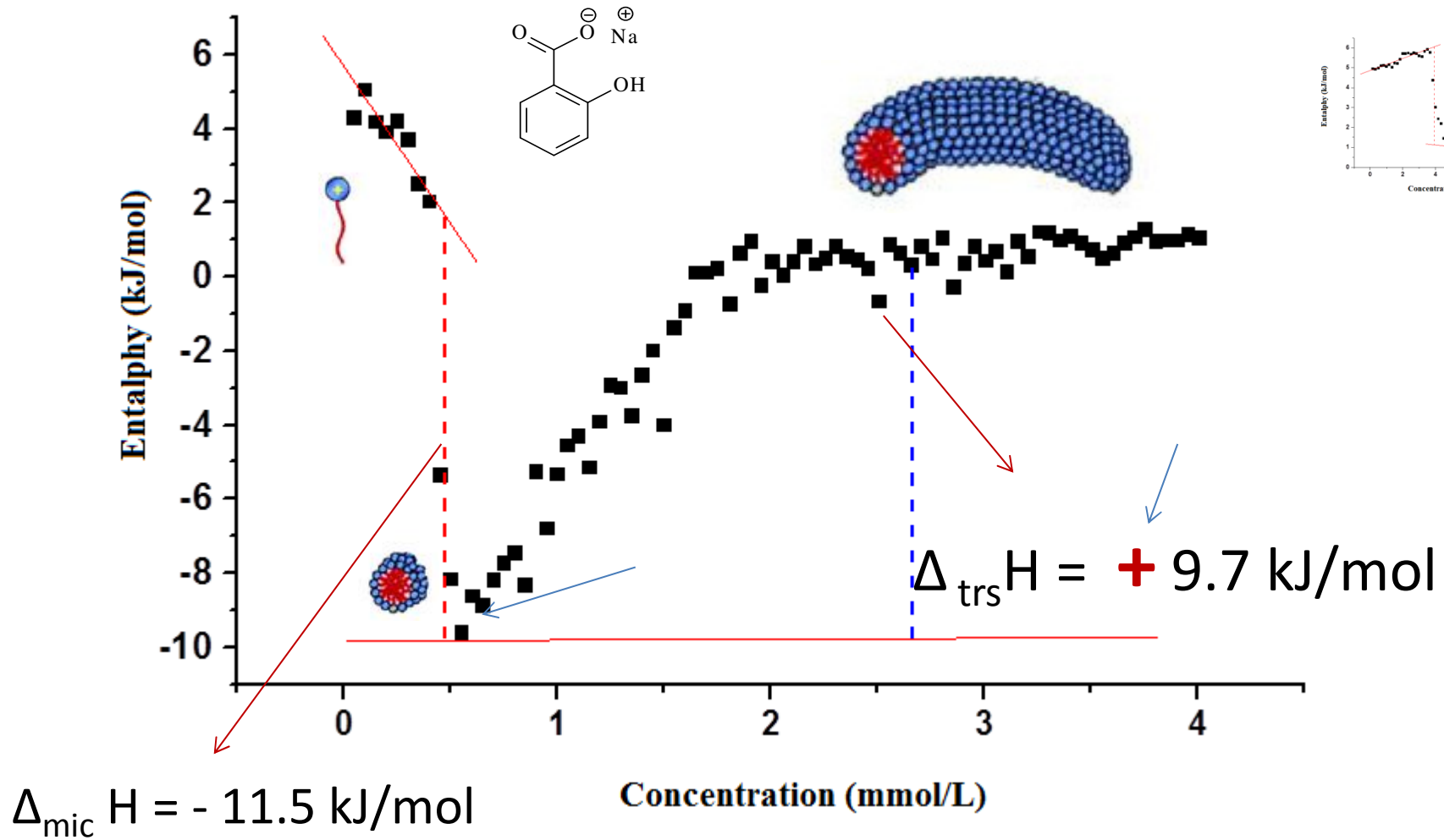


Energética

Micellization of C₁₄TAB, water

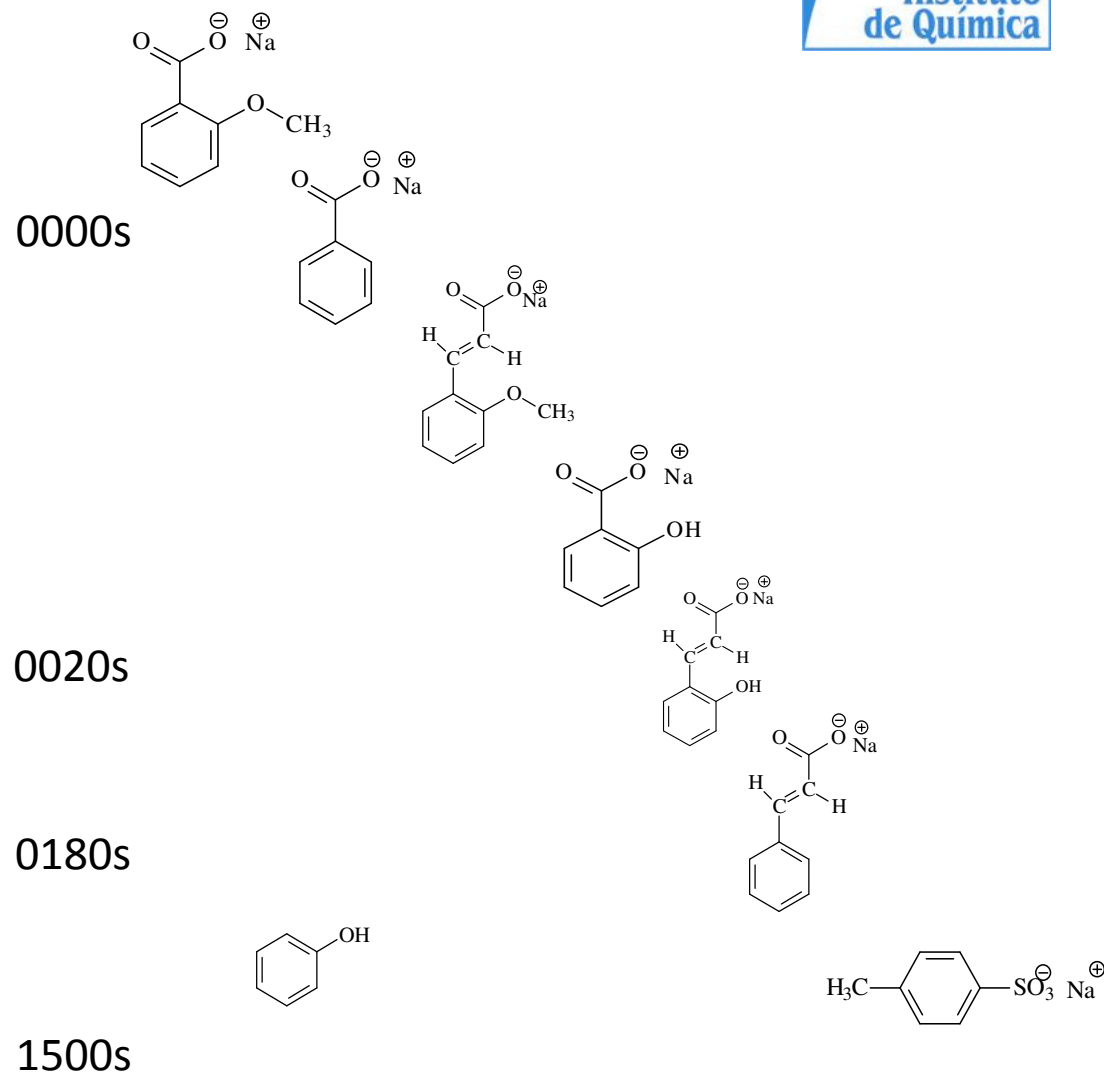
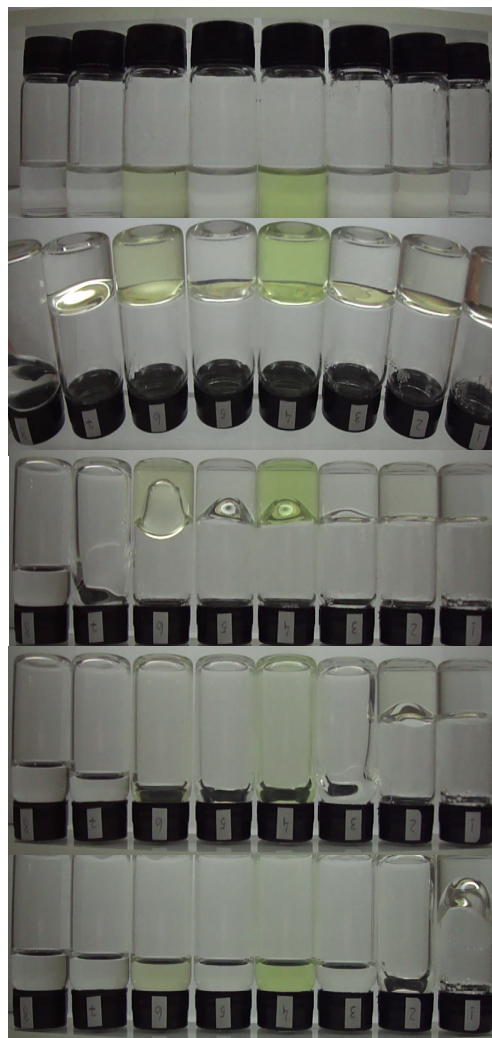


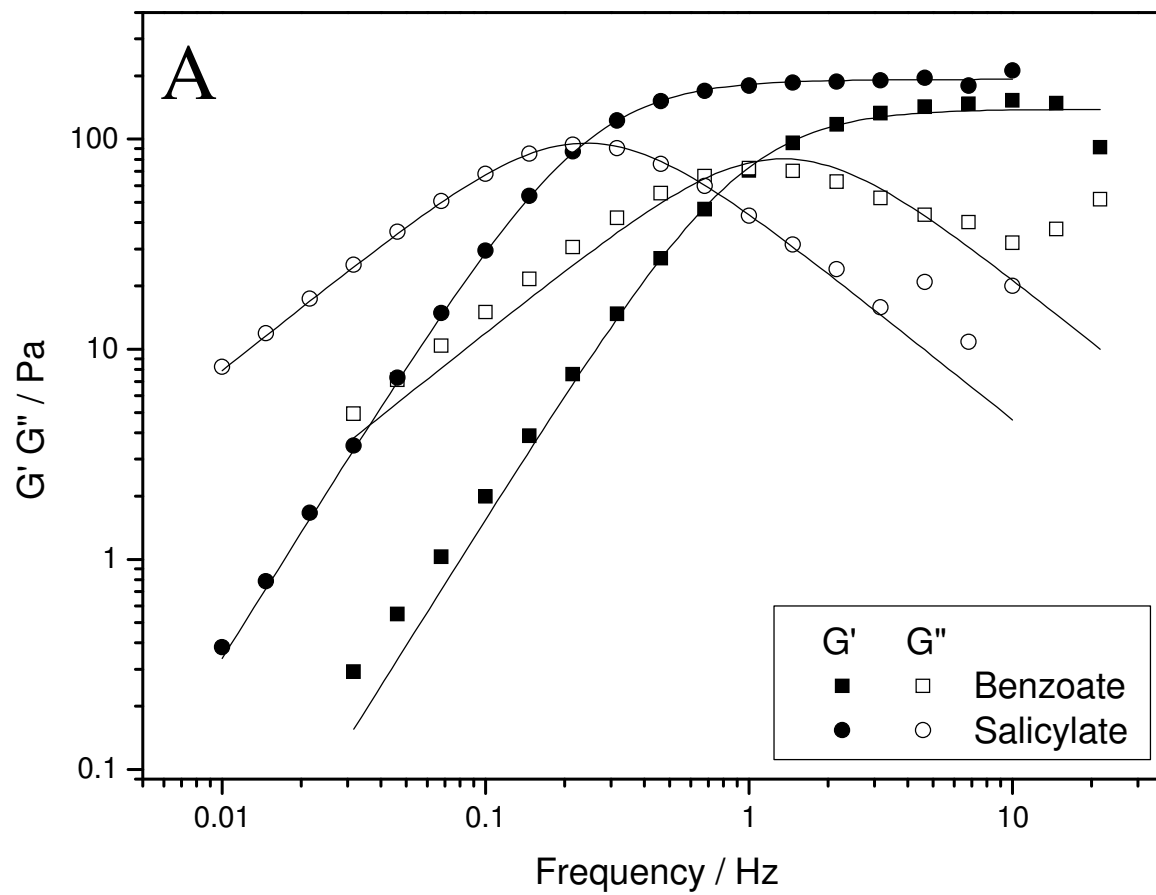
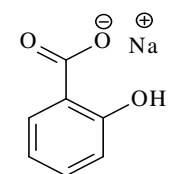
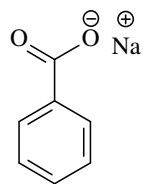
Calorimetric investigation - ITC

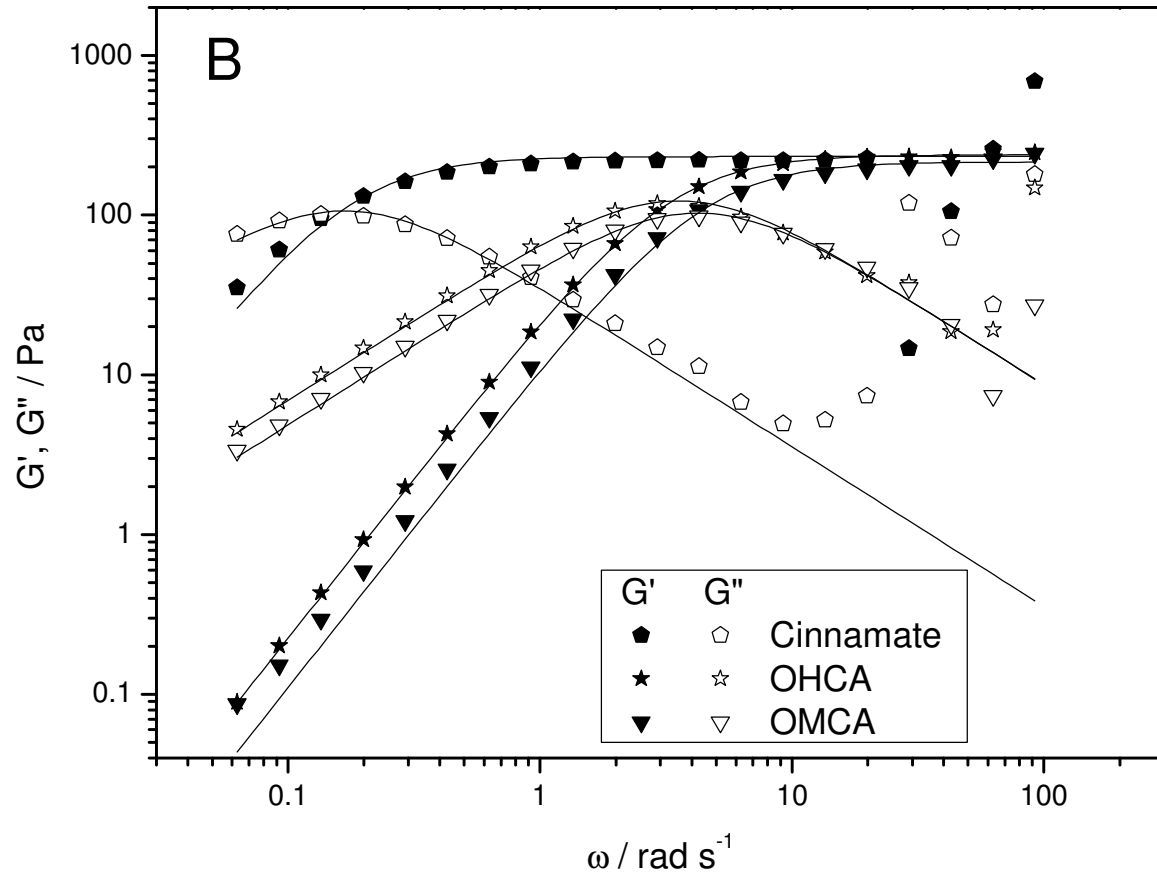
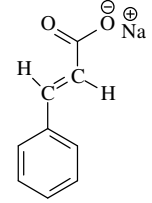
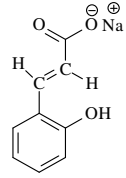
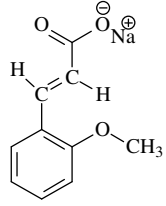


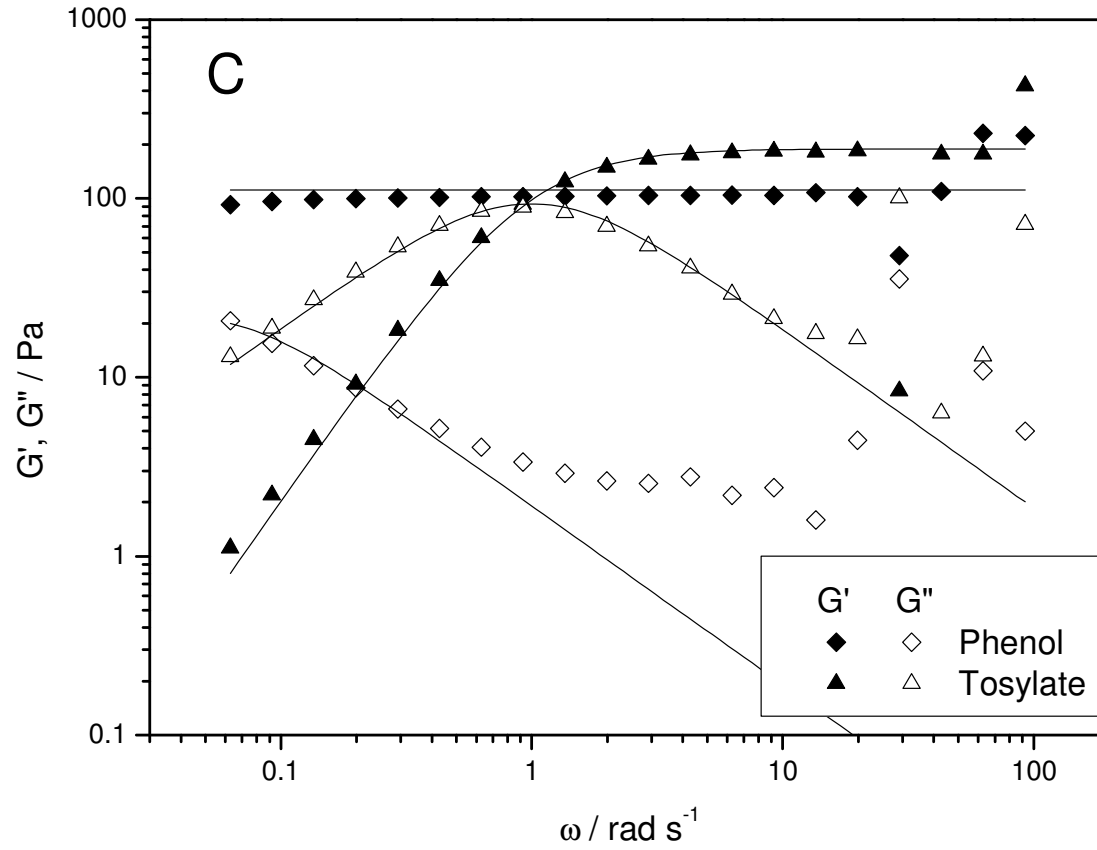
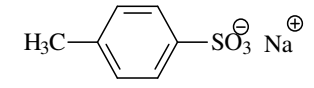
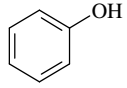
Reologia

Rheology of 200 mM of C16TAB and 200 mM of aromatics









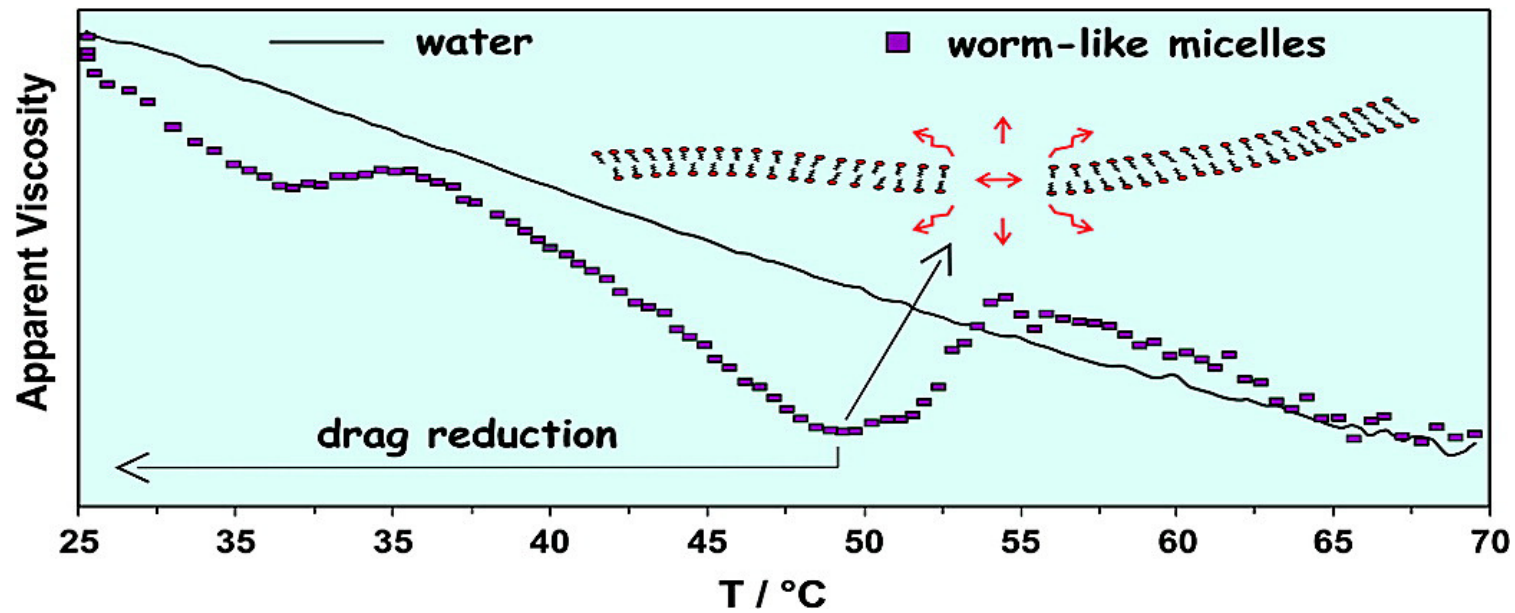
Hydrodynamic drag reduction (?)

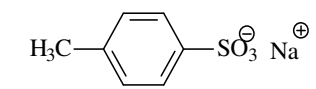
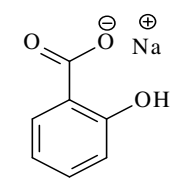
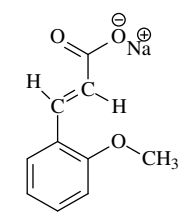
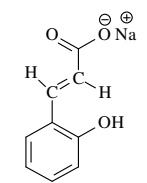
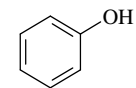
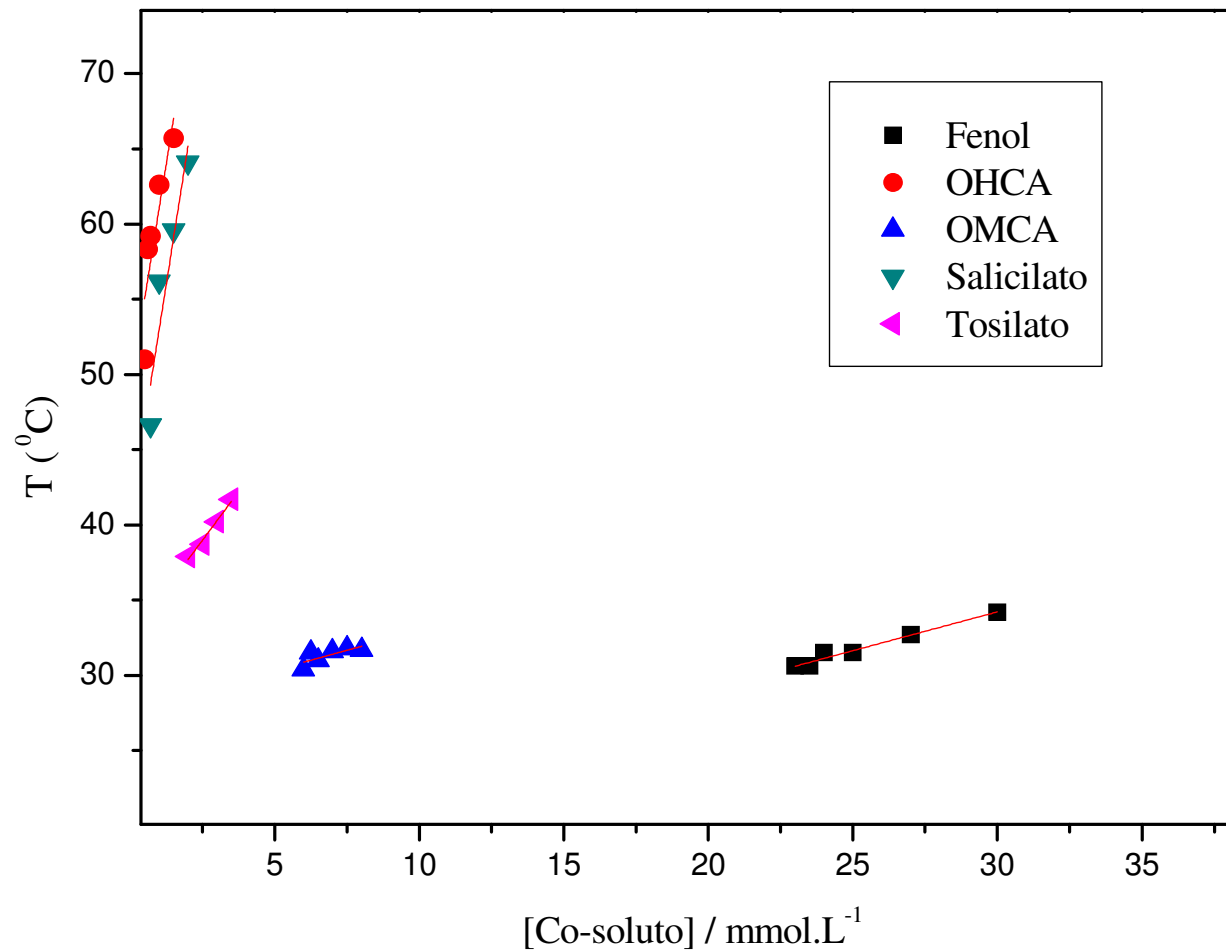


Worm-like Micelles of CTAB and Sodium Salicylate under Turbulent Flow

Roberta K. Rodrigues, Marcelo A. da Silva, and Edvaldo Sabadini

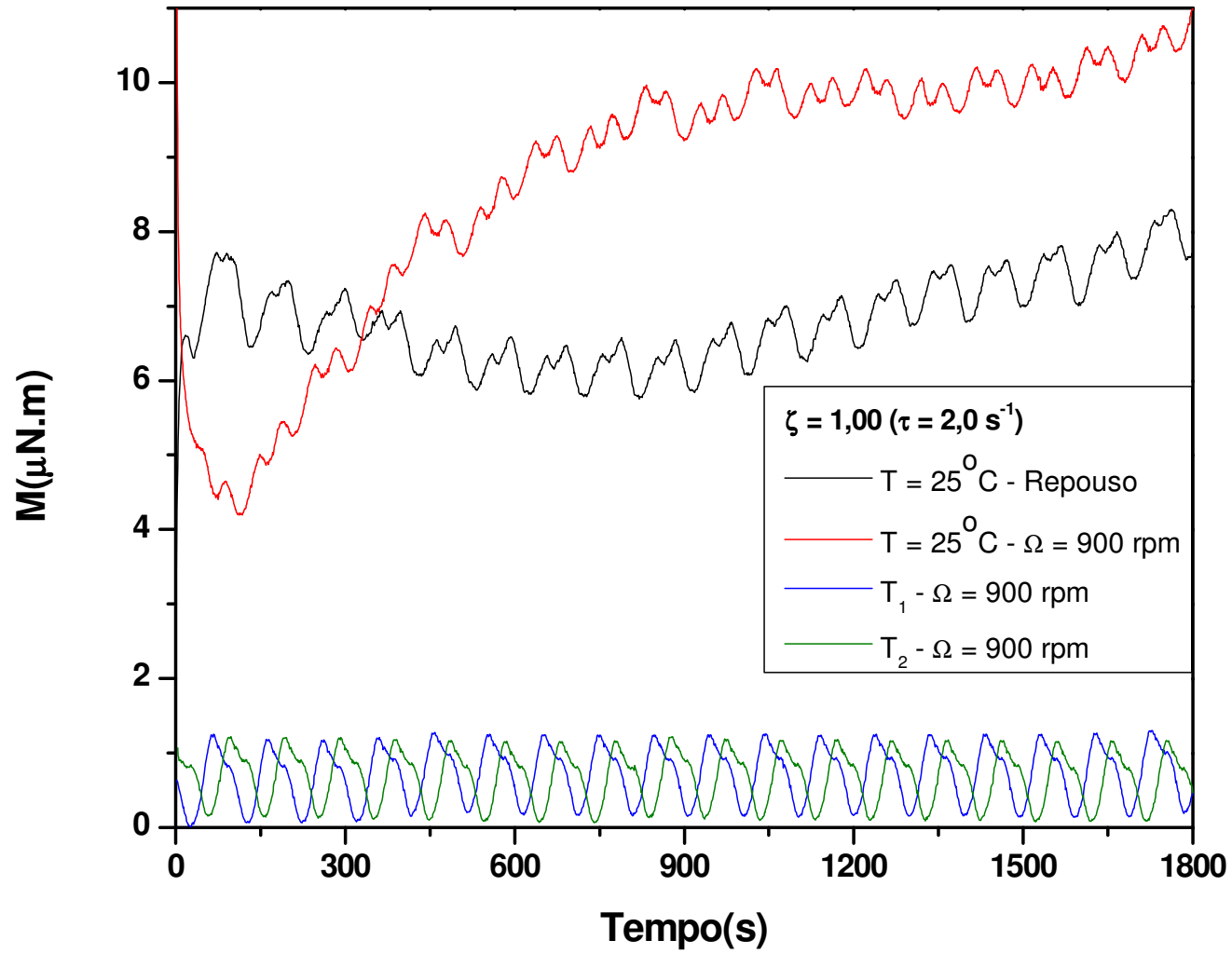
Langmuir, **2008**, 24 (24), 13875-13879 • Publication Date (Web): 18 November 2008

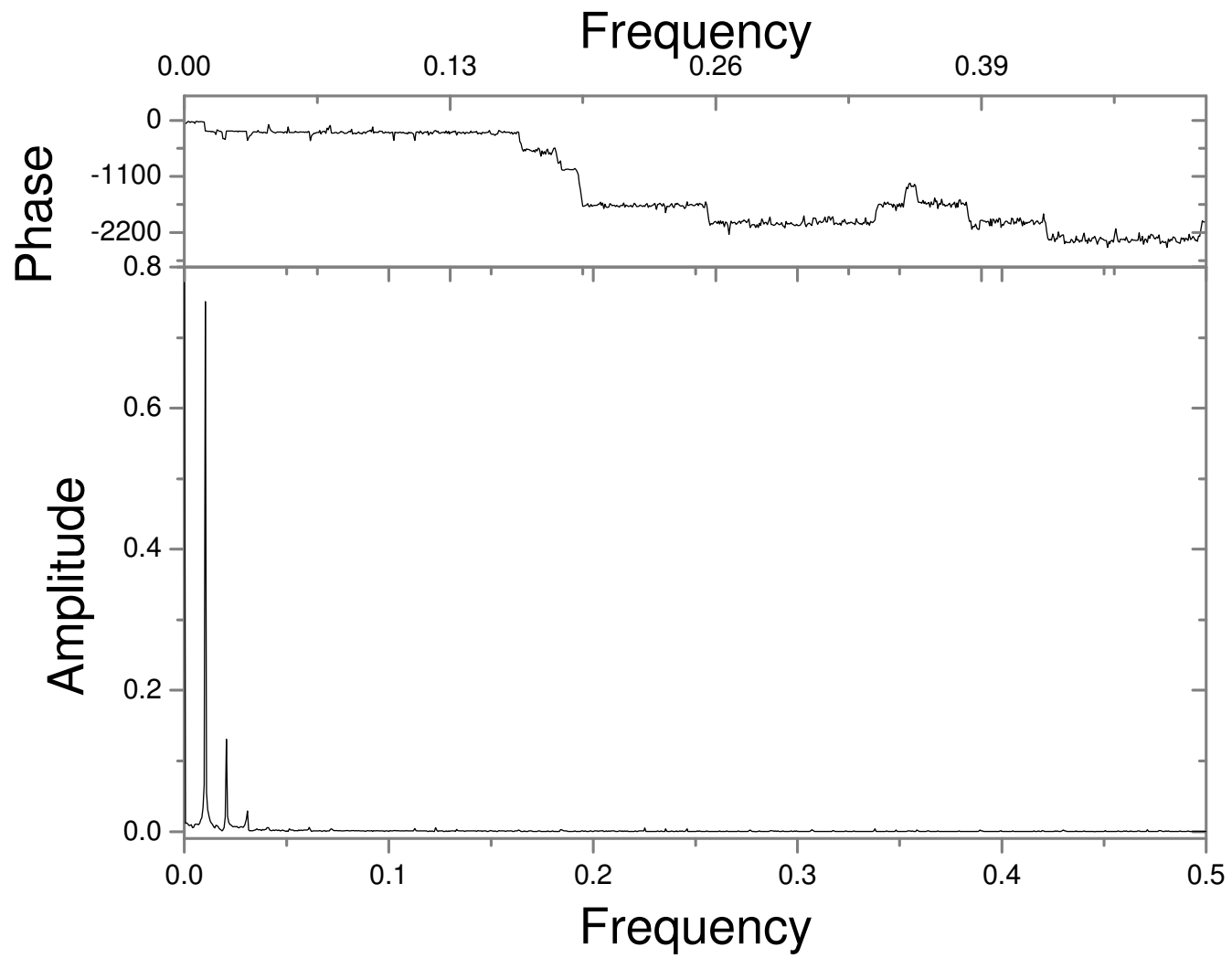




Reo-caos

CTAB + Salicilato





OBRIGADO!