



"Workshop 60 anos do Prof. Glaucius Oliva"

Otavio H. Thiemann

**Laboratório de Biologia Estrutural
Grupo de Cristalografia
31/10/2019**

Where I come from?

Bachelor in Agricultural Engeneering



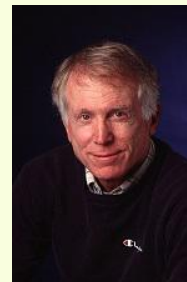
UFRJ

Master Degree in Biophysics/Molecular Biology



UFRJ and FIOCRUZ

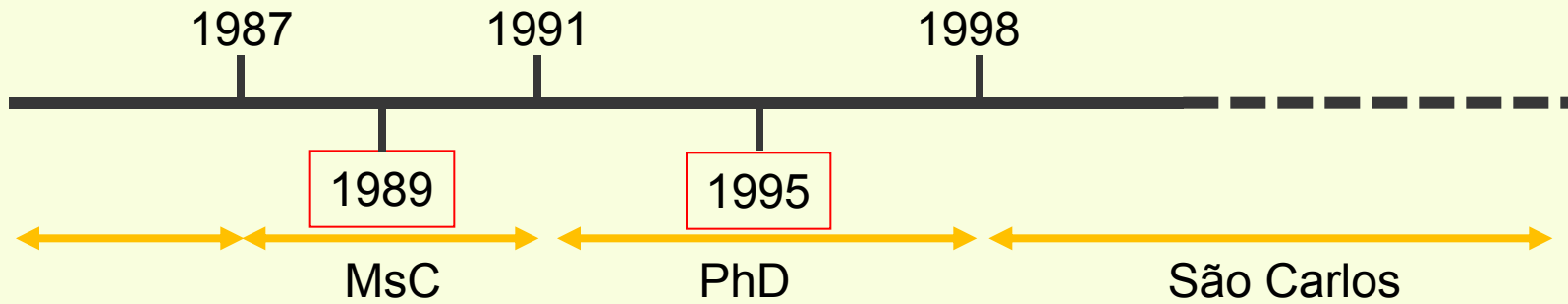
Doctorate Degree in Molecular, Cell and Developmental Biology



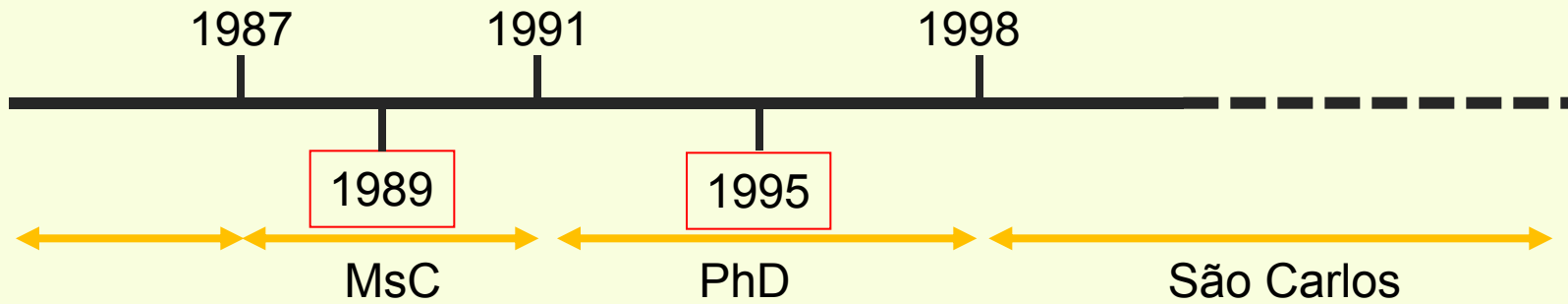
UCLA-HHMI



How did I end up here!



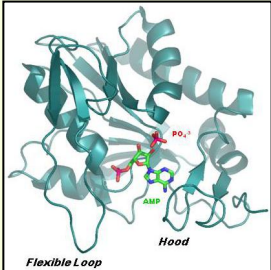
How did I end up here!



Structures solved



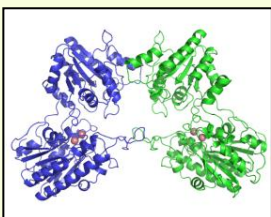
APRT
Homo sapiens



APRT
L. tarentolae



HGPRT
L. tarentolae



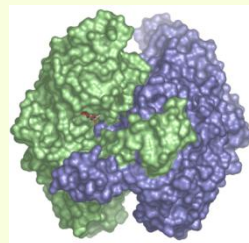
iPGAM
T. brucei



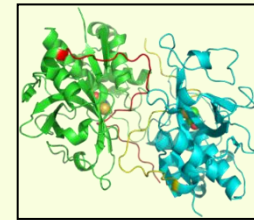
ADSL
L. major



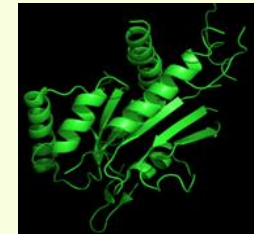
PGI
Homo sapiens



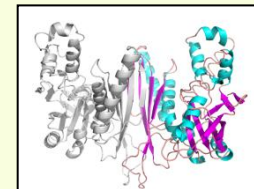
PGI
L. mexicana



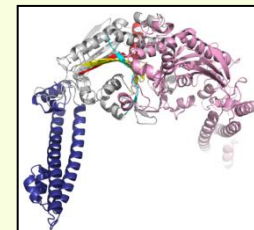
Xylellaína
Xylella fastidiosa



SEP7G
Homo sapiens



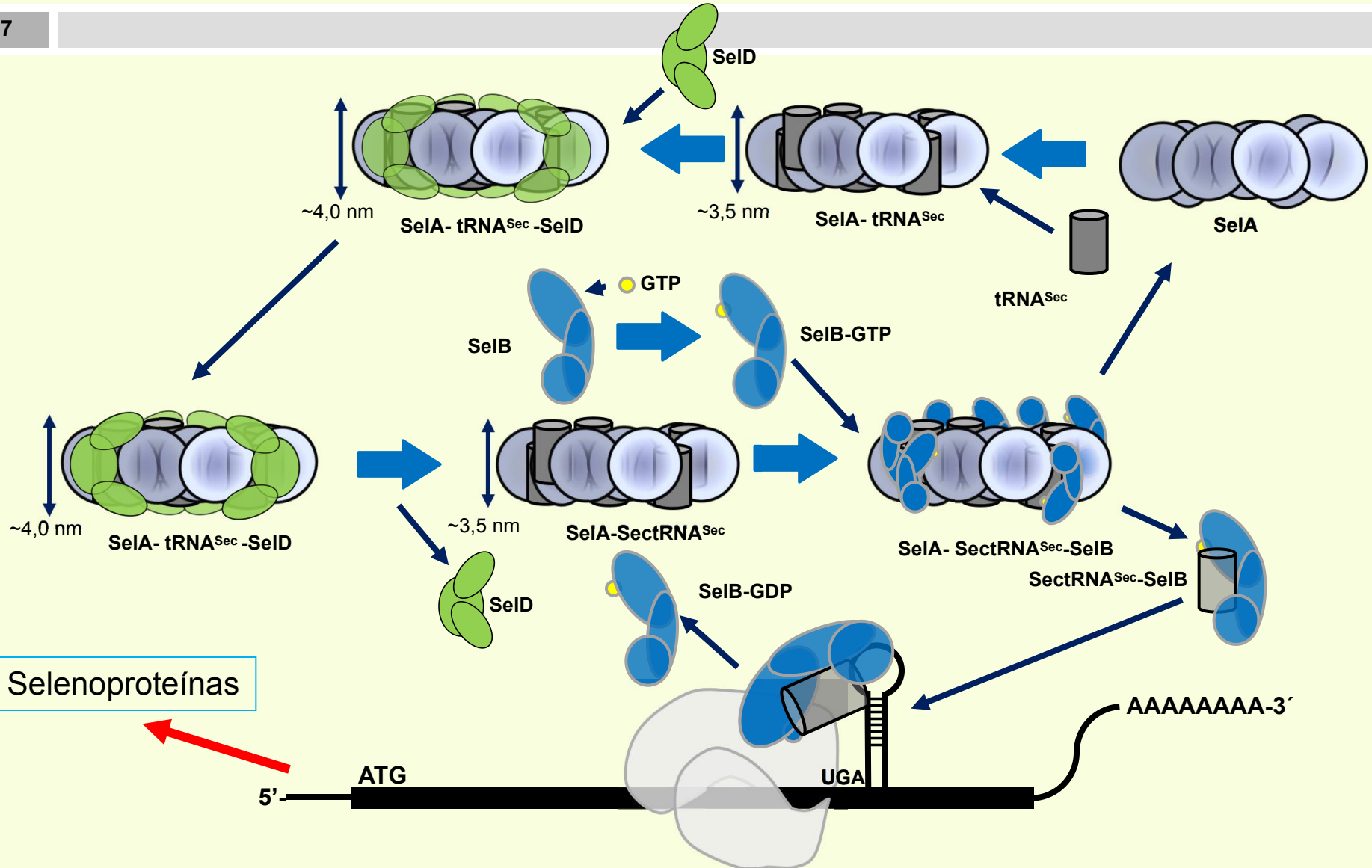
SPS2
L. major



SerilRNA sintetase
T. brucei

Sec synthesis and delivery to the ribosome

7





Obrigado